

Technical Instructions TI-1084

INSTRUCTIONS FOR INSTALLING SET-O-MATIC DROP COIN METER ON GENERATION 6 "W" SERIES WASHERS

CAUTION: THESE INSTRUCTIONS ARE INTENDED TO ASSIST QUALIFIED, EXPERIENCED SERVICE PERSONNEL ONLY! IMPROPER SERVICING OF MACHINERY MAY RESULT IN HAZARDOUS CONDITIONS, PERSONAL INJURY, OR DAMAGE TO PROPERTY. PERSONS NOT TRAINED, OR PERSONS UNFAMILIAR WITH WASCOMAT LAUNDRY MACHINES, SHOULD REFER SERVICING TO QUALIFIED PERSONNEL.

MACHINES AFFECTED: W620 – W675 washers

PARTS REQUIRED: Coin drop kit 080205 (110 volt)
OR Coin drop kit 080206 (220 volt)

INSTRUCTIONS:

1. DISCONNECT ELECTRICAL POWER FROM THE MACHINE.

2. Remove the machine's top panel.

3. Remove the two screws that secure the coin-meter-housing flange to the machine's control panel. Tilt the housing back and lift it from the machine.



Remove the meter housing from washer...

4. If present, remove and discard the coin funnel and the coin-slide adapter faceplate. The faceplate is secured into the front of the meter housing from behind (by two locking nuts).



Remove funnel and faceplate

5. Insert the coin acceptor into the top opening on the front of the coin-meter housing. Insure that the shouldered studs at the bottom edge of the meter lock onto the housing's center rail. Secure the acceptor in place from the inside with the long hex-shafted bolt and washers provided.

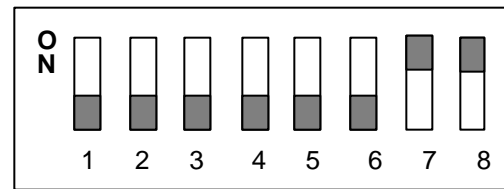


Insert the coin meter...



and secure it in place.

6. Using care to avoid electrostatic discharge damage, unpack the coin meter circuit board. Set the DIP switches on the board for the desired amount to start. This will be equal to the sum of the number of coins called for by each switch. For example, if switches 2 and 3 are on, it will take 6 coins to start the machine (2 for switch 2, 4 for switch 3).

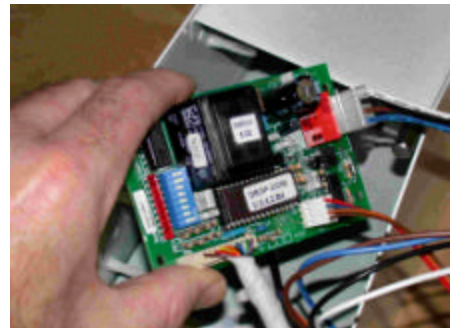


SWITCH #	1	2	3	4	5	6
COINS TO START	1	2	4	8	16	32

7. Also turn on switch #7 (pulse-time control) and switch #8 ("cheating punishment" control - see separate description provided by meter manufacturer).

ELECTRICAL CONNECTIONS:

8. Install the four circuit-board standoffs into the side plate of the meter housing. Be sure to use the holes shown, as these correspond to the mounting holes in the circuit board.
9. Connect the two harnesses from the coin acceptor to the matching four and ten pin plugs on the circuit board. Also connect the separate four-wire harness (with colored wires) to the larger connector on the circuit board. BE CERTAIN TO INSTALL ALL CONNECTORS PROPERLY – THE LOCKING TABS ON THE CONNECTORS MUST FACE THE PLASTIC WALL ALONGSIDE THE PINS ON THE CIRCUIT BOARD CONNECTOR!
10. If not already present, connect the six-position card-edge connector, on the coin meter harness (supplied with washer), to location X21 on the timer. Note that although the connector is keyed, it will fit on the timer circuit board two different ways. Install the harness as shown, with the wires facing away from the coin meter (left when viewed from front).



11. Align the holes in the coin meter circuit card with the standoffs installed in step 8 (orient the coin meter circuit card so that the dip switches are easily accessible after mounting). Press the coin meter circuit card onto the four standoffs. Press firmly to lock in place, taking care to avoid damaging the circuit card. Check that all of the harnesses are clear of the coin acceptor to avoid rejection of coins.



12. Re-mount the coin meter housing onto the front of the machine. Connect together the six-pin plug from the circuit card with the one that is connected to X21 of the timer, installed in step 10. Adhere the DIP switch reference label to the top of the coin meter housing, as shown.



13. Replace the machine's top panel.
14. Restore power to the machine. The coin meter display will show the number of coins that are required to start the washer.
15. Test the system, as follows: Open the loading door. Deposit the required number of coins. The coin meter will display "od" for "open door". Close the loading door. The washer will start its cycle.

If you need assistance with this or any Wascomat service procedure, call our Technical Support department at 516-371-0700, Monday-Friday, 8AM-5PM Eastern time. Skilled technicians are available to assist you.

(ti1084) 3/2002